

DID YOU KNOW?

99.4% of Washington students are **funded with community levy dollars** including students in **every other district in Southwest Washington.**



The state pays for	Woodland actually needs
3.96 instructional aides	32 instructional aides
9.1 building custodians	19 building custodians
2.25 school nurses	4 school nurses

The **Woodland community** has a **long tradition of supporting their students** by helping fund schools through levy dollars.



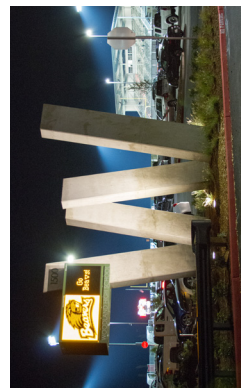
BALLOTS DUE
FEBRUARY 13, 2024
REGISTER TO VOTE ONLINE
www.myvote.wa.gov

NON-PROFIT
PERMIT #404
U.S. POSTAGE
PAID
WOODLAND, WA

POSTAL CUSTOMER



WOODLAND
Public Schools
800 Second Street
Woodland, WA 98674



BALLOTS DUE
Tuesday, February 13
Ballots will be mailed to voters January 26

Woodland Public Schools is an equal opportunity district.

This fact sheet is published as part of Woodland Public Schools' obligation to provide election information to the community.

woodlandschools.org/levy • 360-841-2700

WHY DO WOODLAND SCHOOLS NEED A LEVY?

FACTS VOTERS
NEED TO KNOW

BALLOTS DUE BY:
FEBRUARY 13, 2024
Ballots will be mailed to voters January 26



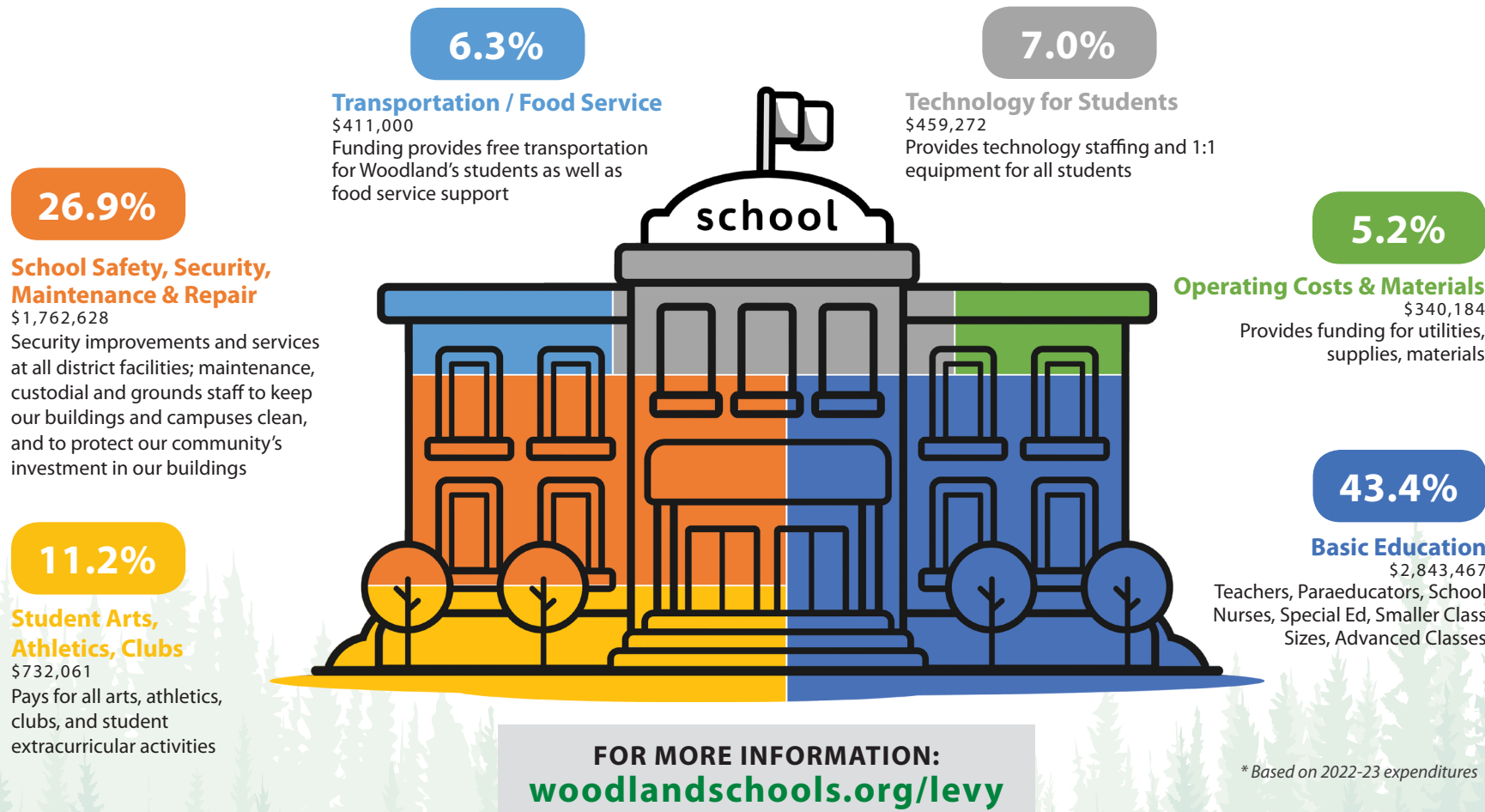
WOODLAND
Public Schools

woodlandschools.org/levy

School Levies Fund Smaller Class Sizes, Student Learning Needs, School Nurses, Student Athletics and much more...

Woodland's EP&O levy is **NOT** new.

What Do School Levies Pay For?



The board requests **REINSTATEMENT** of an EP&O levy to make up the funding difference between what the state provides and what **SCHOOLS NEED**.

The School Board guarantees the EP&O levy rate will not exceed \$2.20

Proposed Levy Amounts & Rates

Year	Estimated Annual Levy Rate*	Levy Amount
2025	\$2.20	\$7,050,000
2026	\$2.20	\$7,400,000
2027	\$2.20	\$7,775,000

*Tax rates are per \$1,000 of assessed property value.

LEVY INFORMATION SESSIONS

- Jan 22 CES 6:30-8pm
- Jan 23 WMS 6:30-8pm
- Jan 29 NFES 6:30-8pm
- Jan 30 Yale 6:30-8pm
- Jan 31 Virtual 6:30-8pm
- Feb 5 WHS 6:30-8pm

TAX EXEMPTIONS: Disabled persons, veterans with service-connected disabilities, and those 61 years of age or older may be eligible for tax relief. Applications are available at the Cowlitz County Assessor's office (360) 577-3010 or the Clark County Assessor's office (360) 397-2391.

Are you **REGISTERED** to vote?
www.myvote.wa.gov